

# Merlin

---

## Module for Effortless Redundancy and Loadbalancing In Nagios

- A couple of different scenarios

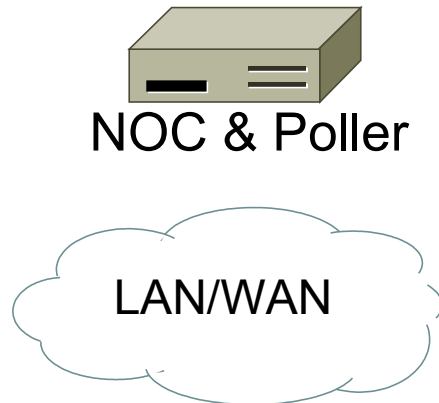
disclaimer: Some of this is still on idea state and might change in the future

# Terminology

---

- NOC = Nagios server receiving status information from a poller
- Poller = Nagios server sending status information to a NOC
- Peer = Nagios servers acting as loadbalancers, monitoring the same hosts/services

# Single System



## **NOC ↔ NOC**

- Configuration\*
- Commands
- Check results

## **NOC → Poller**

- Configuration\*
- Commands

## **Poller → NOC**

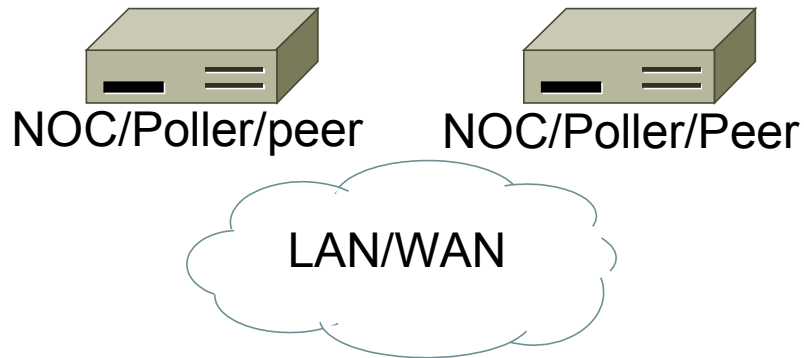
- Check results

## **Poller ↔ Poller (Peers)**

- Check results

\* not yet implemented

# Redundant Loadbalanced systems



## **NOC ↔ NOC**

- Configuration\*
- Commands
- Check results

## **NOC → Poller**

- Configuration\*
- Commands

## **Poller → NOC**

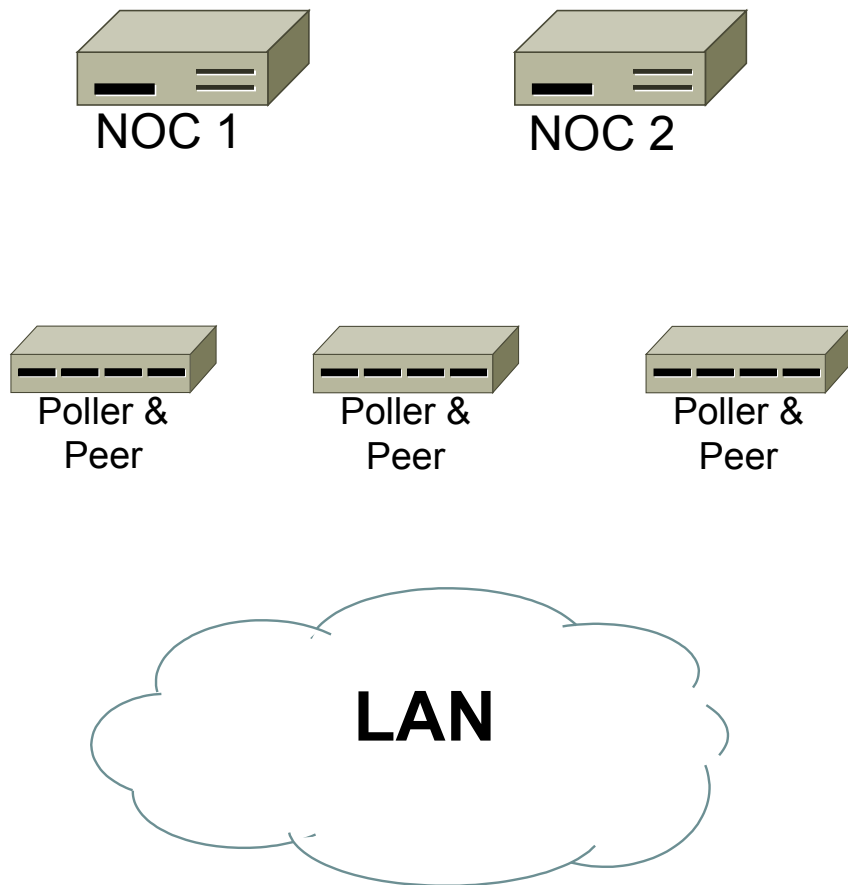
- Check results

## **Poller ↔ Poller (Peers)**

- Check results

\* not yet implemented

# Redundant NOC and n loadbalancing Pollers on the same Lan segment



## **NOC ↔ NOC**

- Configuration\*
- Commands
- Check results

## **NOC → Poller**

- Configuration\*
- Commands

## **Poller → NOC**

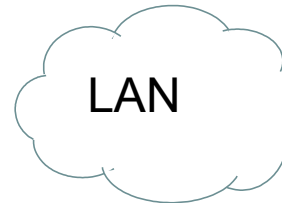
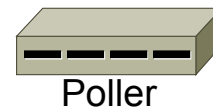
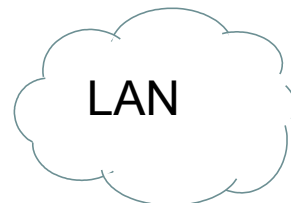
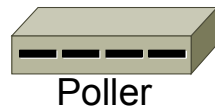
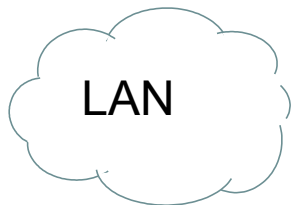
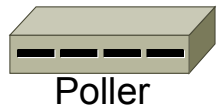
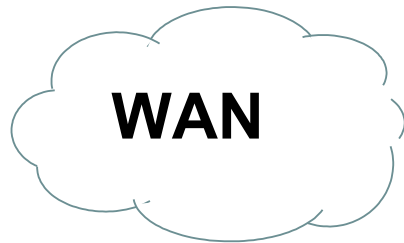
- Check results

## **Poller ↔ Poller (Peers)**

- Check results

\* not yet implemented

# Redundant NOC and distributed Pollers



## NOC ↔ NOC

- Configuration\*
- Commands
- Check results

## NOC → Poller

- Configuration\*
- Commands

## Poller → NOC

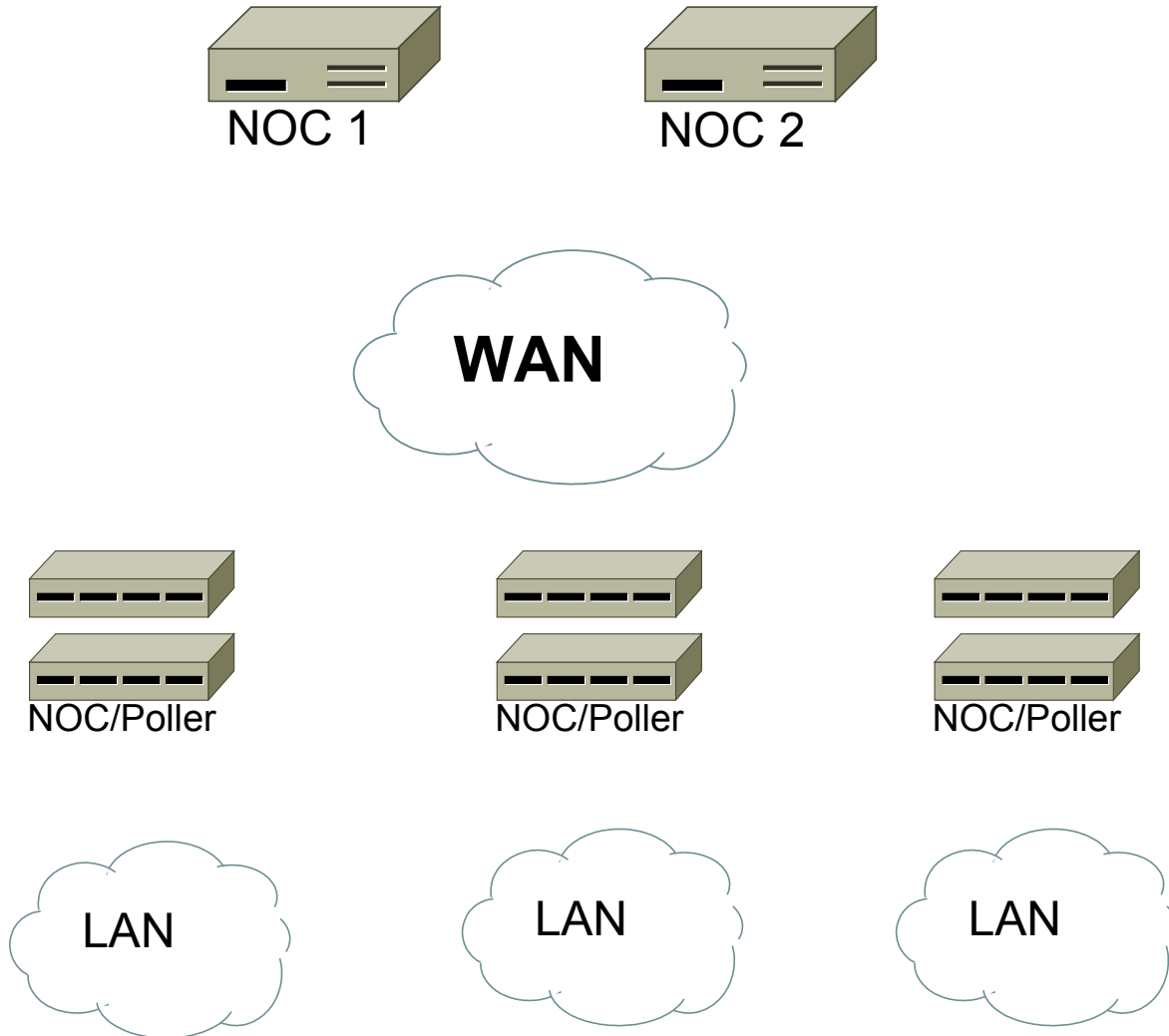
- Check results

## Poller ↔ Poller (Peers)

- Check results

\* not yet implemented

# Redundant NOC and distributed Redundant NOC/Pollers



## **NOC ↔ NOC**

- Configuration\*
- Commands
- Check results

## **NOC → Poller**

- Configuration\*
- Commands

## **Poller → NOC**

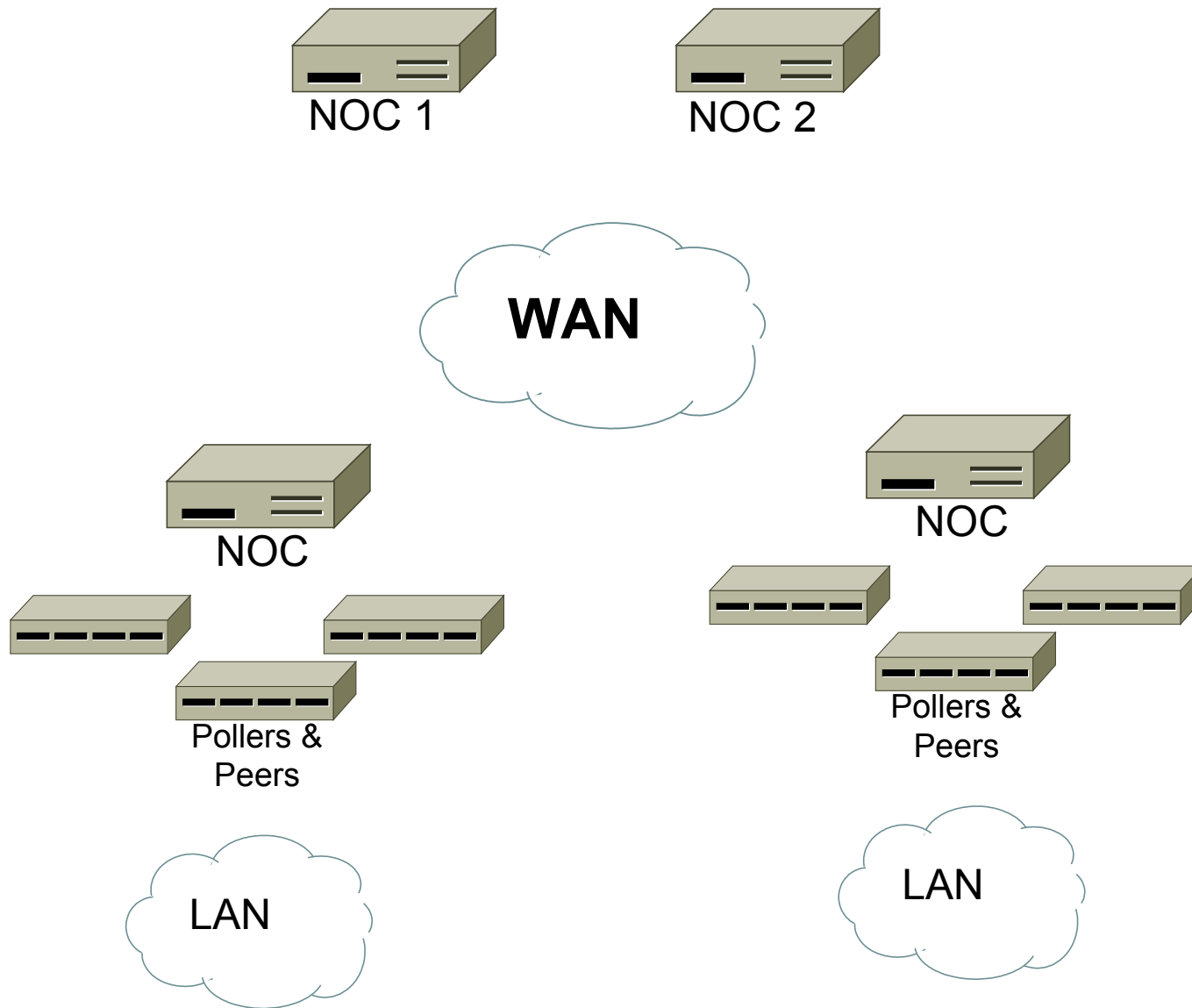
- Check results

## **Poller ↔ Poller (Peers)**

- Check results

\* not yet implemented

# Redundant central NOC's and distributed Noc's with Pollers/Peers



## **NOC ↔ NOC**

- Configuration\*
- Commands
- Check results

## **NOC → Poller**

- Configuration\*
- Commands

## **Poller → NOC**

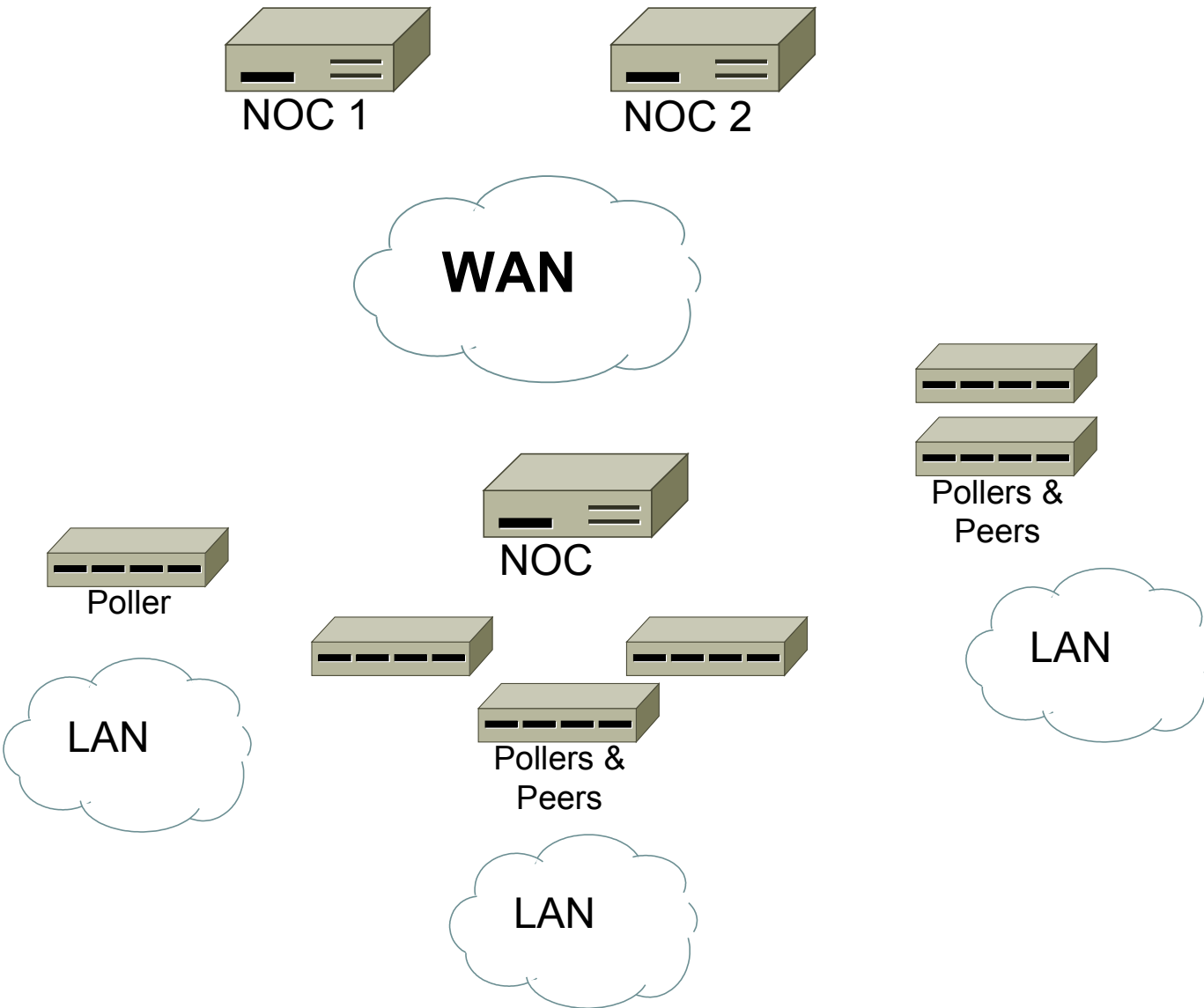
- Check results

## **Poller ↔ Poller (Peers)**

- Check results

\* not yet implemented

# Mixed Environment



## **NOC ↔ NOC**

- Configuration\*
- Commands
- Check results

## **NOC → Poller**

- Configuration\*
- Commands

## **Poller → NOC**

- Check results

## **Poller ↔ Poller (Peers)**

- Check results

\* not yet implemented